

# Pantographs from Pinhole Quilting

Pantographs are an excellent way to create scalable, repetitive designs on your quilt. They can be blocks, sashing, borders or all over edge to edge designs which cover the whole quilt from side to side.

We have provided a range of basic pantograph designs to get you started or for Longarm Quilters who want to add to their collection. We have selected packs and rolls (10' long strips). In addition to these designs we can also get any of the designs on the Golden Threads website ([www.goldenthreads.com](http://www.goldenthreads.com)). Golden Threads is part of Handi Quilter so with sufficient notice, individual items can be added to our regular orders. Please enquire about pricing (as a guide, dollars equals pounds, ie if it says \$16.95 on the Golden Threads website it will be around £17 in the UK including VAT).

The packs have full instructions and tips on how to use pantographs. Reproduce the designs or scale them to fit your quilt design. To scale designs the Proportional Scale is really useful. Golden Threads paper and Preview Paper are also very useful design tools. See Golden Threads on their You Tube channel for more information.

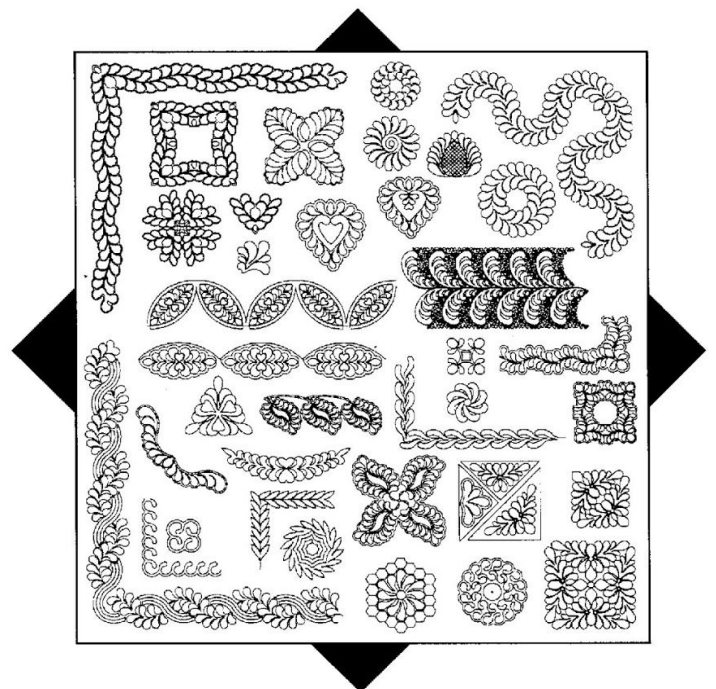
<https://www.youtube.com/user/GoldenThreadsHQ>

## *Keryn Emmerson's Collection*

### *Simply Feathers*

An exquisite collection. One of our most popular packs. All 38 designs are continuous line to create an easy flow of stitching for both hand and machine quilters. Stitching diagrams are given on each page. Features 6 pages of creative ideas and directions for two different methods of making borders fit. For your convenience there are several long border designs for use on large quilts. Create your own gorgeous trapunto or whole cloth projects.

**Item No. SF1**



# Keryn Emmerson's Collection

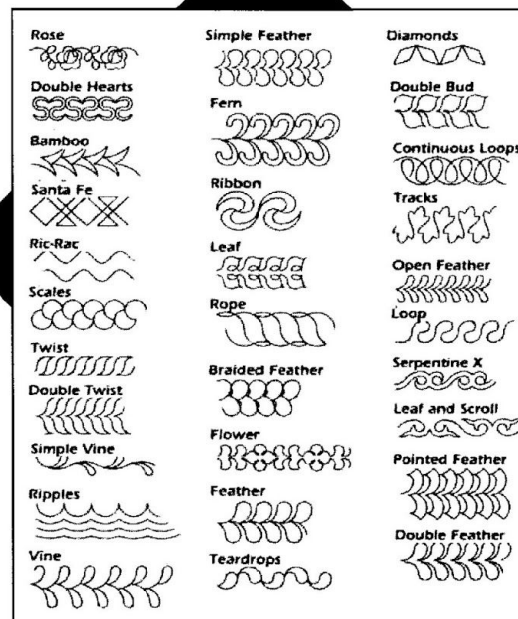
## Bold Beginnings...

Our border and block packs have proven to be a favorite of beginners and experienced quilters alike! The continuous line quilting designs have 1-2 lines of stitching and can be used by hand and machine quilters. Packets include stitching diagrams and helpful tips from the designer.

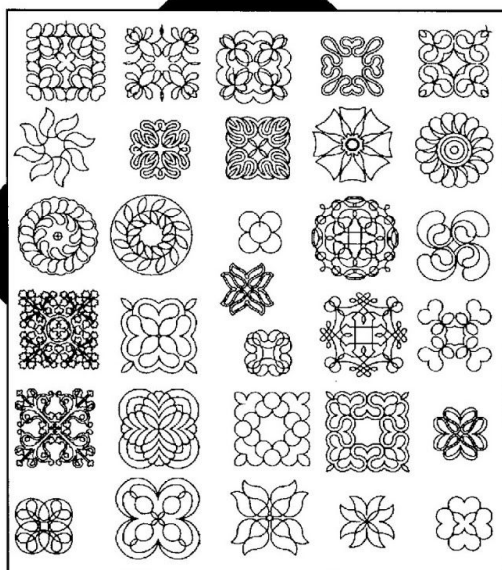
### Border Pack

30 border designs with corners.  
Actual widths range from 1½" to 3½"

Item No. BBR1



© 2001 Keryn Emmerson



### Block Pack

30 block designs with corners.  
Actual widths range from 4½" to 9"

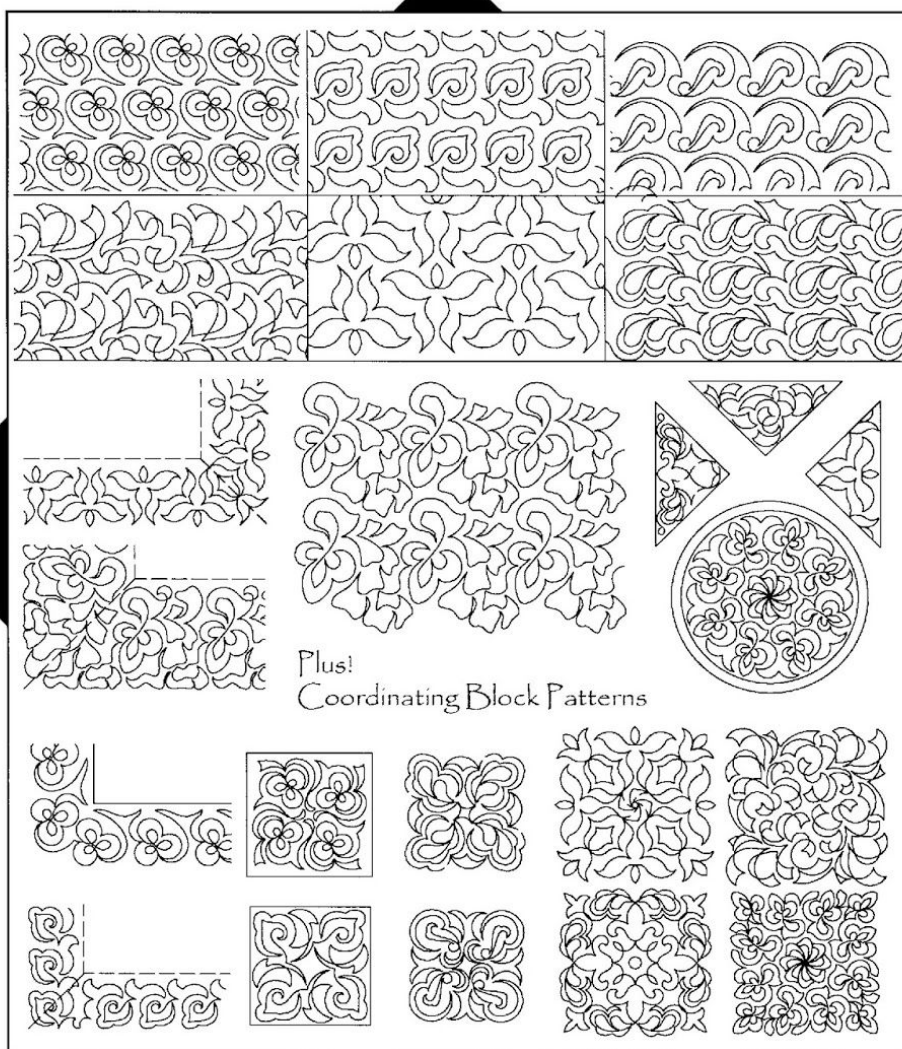
Item No. BBL2

# Keryn Emmerson's Collection

## *Pantographs Plus!*

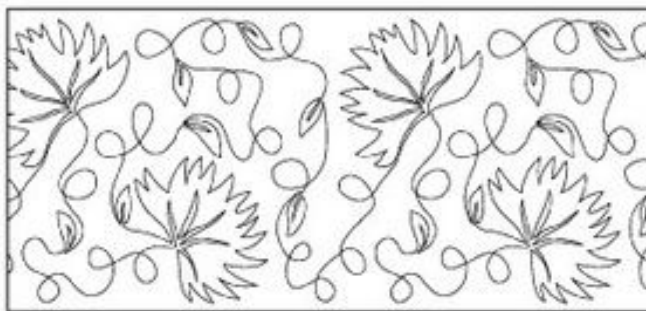
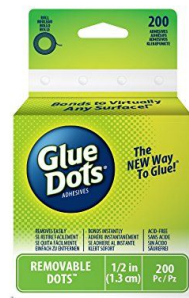
- Over 2 dozen continuous line quilting patterns.
- Pantographs, Blocks, Borders, and Triangle patterns
- Pantograph starters allow you to make patterns to fit your project.
- Easy to understand instructions for positioning pantographs

Item No. PPLUS1



© 2006 Keryn Emmerson

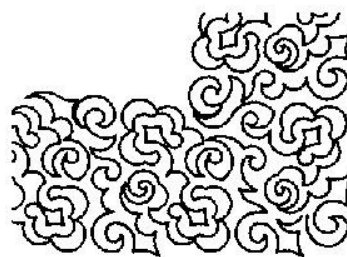
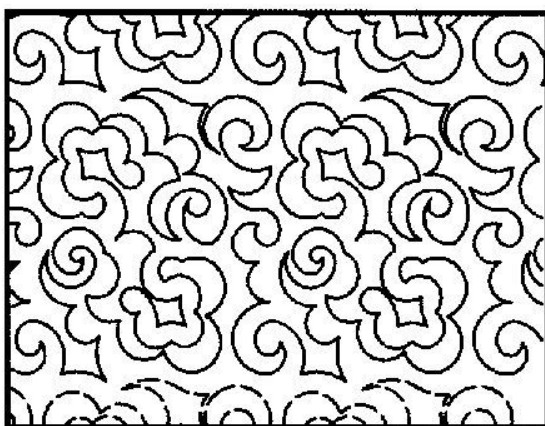
Each of the following pantographs is printed on a long 10' roll that can be laid on the bed of your quilt frame. They have centre and alignment lines. They can be used as edge to edge or as borders and come complete with corner designs with mitre alignment lines. The pantographs can be attached to the table using removable sticky dots such as this one by Gluedot.



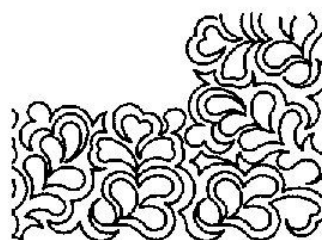
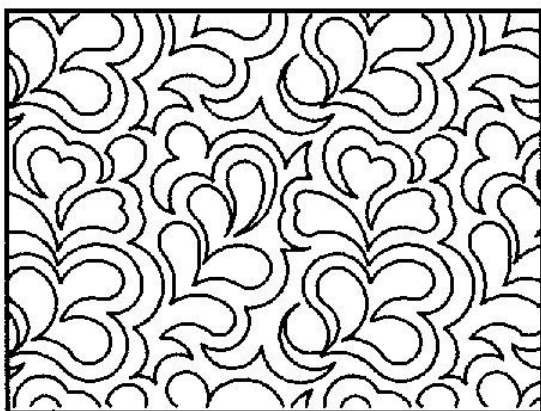
**Cardinal Climbers**  
**RD401**  
**14" Wide Rows**

(Needs a minimum of 18" throat space - either Handi Quilter Avante or Infinity)

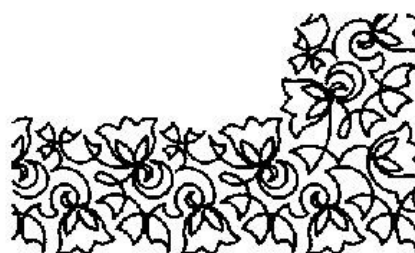
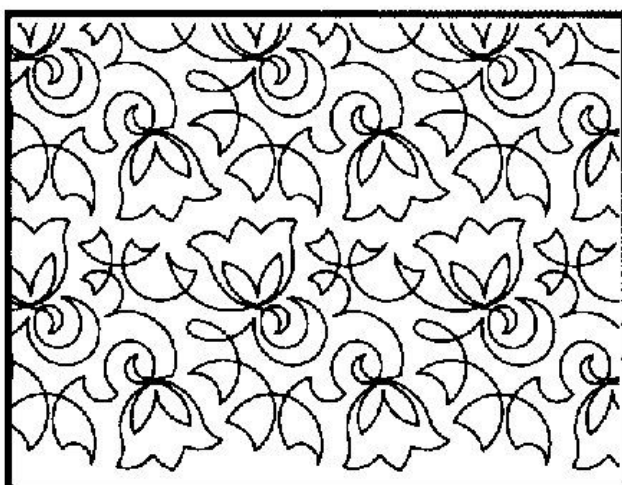
The following pantograph designs are suitable for any of the Handi Quilter frame machines including the Simply Sixteen. We recommend that the maximum width for a Simply Sixteen is a 12" wide design and 14" for the Avante.



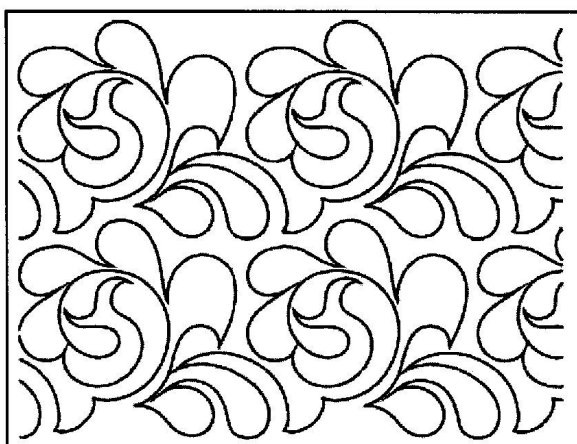
**Jade**  
**11 3/4" wide rows**  
**RD 128 -**



**Maidenhair**  
10" wide rows  
RD 131 -



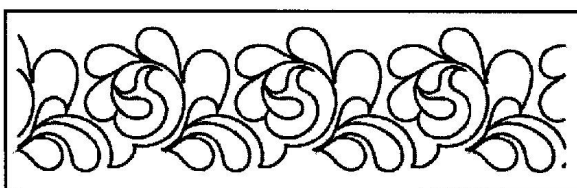
**Bellflower**  
9 3/4" wide rows  
RD 125 -



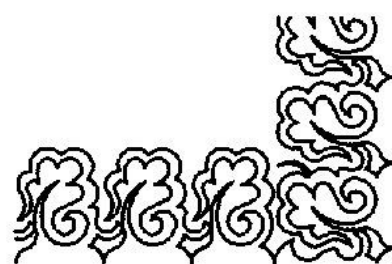
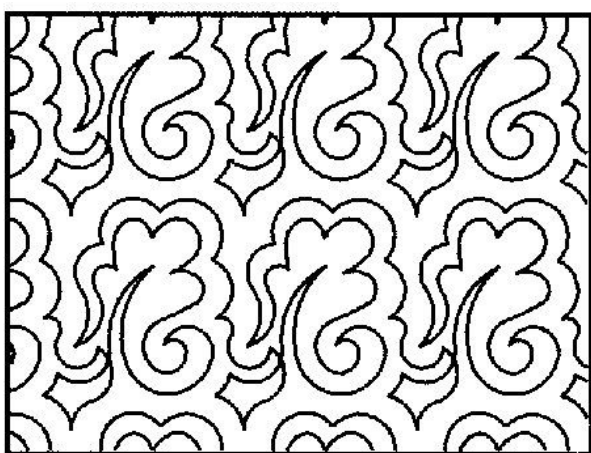
**Feather Me - 9" wide rows**

RD271-9

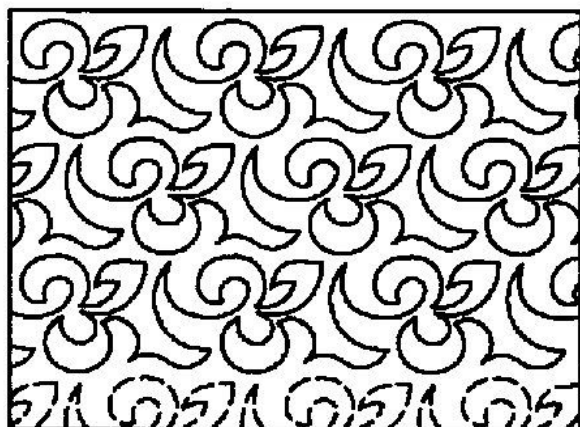
A long 10' roll that can be  
used as a Border or for  
Edge to Edge Designs



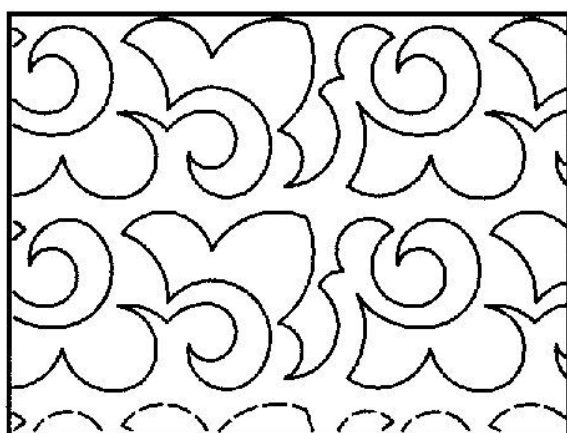




New Leaf  
6" wide rows  
RD 133 -



Erin  
RD123  
5½" wide rows



Sedum  
4 1/2" wide rows  
RD 136 -

## Other Pantograph and Quilt Design Accessories

### Golden Threads Paper

We supply the 18" wide by 20 yards long roll



Golden threads is a fine, yellow transparent vellum. There are lots of ways of using Golden Threads paper to help with quilting your quilt without marking the top. Golden Threads

Quilting Paper tears away cleanly and easily without pulling out your stitches. You can use it with the No-Marking Method to create tear away stencils. It can also be used for: paper piecing, trapunto, applique, machine embroidery, sketching and tracing, duplicating, adjusting and designing patterns, bobbin work and general home sewing.

See the Golden Threads Channel on You Tube for more information.

[Link to Golden Threads You Tube Video](#)

### Quilter's Preview Paper (20" x 25', 41.66 sq. ft.)



Quilter's Preview Paper is a design tool to help quilters audition quilting motifs for their quilt. Simply lay the clear film over the quilt and use a marker to draw quilting designs.

(Marks are easily removed with alcohol and a scrap of batting.)

Quilter's Preview Paper is also useful for applique placement.

Full instructions for use are included.

## Pounce Pad



The Pounce Pad is a quick way to mark your quilt top, even when it's mounted on your frame.

The reservoir (sealed by the red stopper) is filled with the enclosed fine chalk powder. On the reverse a soft pad can be gently brushed over a stencil placed on the quilt top in the desired position. The fine chalk powder is dispensed between the stencil grooves and when the stencil is removed the chalk can be used as a guide for quilting.

We find that the chalk powder is either naturally removed whilst quilting, can be brushed away using a clothing brush or can be ironed away.

## Quilter's Assistant Proportional Scale

If you use one of the pantograph packs the design might not perfectly fit into your quilt. So, to work out what percentage to increase or decrease your pantograph design, line up the measurement of the current design size on the inner ring with the new size measurement on the outside ring. The percentage increase or decrease will appear in the window opening. Use the number to resize on a copy machine or scanner. Measurements are in inches and percentages.





## Pricing

<b>PANTOGRAPHS &amp; RELATED PRODUCTS</b>	<b>Retail</b>
<b>Bold Beginnings Blocks (30 designs)</b>	<b>£16.00</b>
<b>Bold Beginnings Borders (30 designs)</b>	<b>£16.00</b>
<b>Pantographs Plus Packet</b>	<b>£22.00</b>
<b>Simply Feathers (38 designs)</b>	<b>£19.00</b>
<b>Cardinal Climbers (14" x 10')</b>	<b>£16.50</b>
<b>Jade (11.75" x 10')</b>	<b>£17.00</b>
<b>Maidenhair (10" x 10')</b>	<b>£17.00</b>
<b>New Leaf (6" x 10')</b>	<b>£15.00</b>
<b>Sassy (7.75" x 10')</b>	<b>£15.00</b>
<b>Sedum (4.5" x 10')</b>	<b>£15.00</b>
<b>Erin (5.5" x 10')</b>	<b>£16.50</b>
<b>Bellflower (9.75 x 10')</b>	<b>£15.00</b>
<b>Feather Me - Large (9" x 10')</b>	<b>£16.50</b>
<b>Ultimate Quilt Pounce Set (white)</b>	<b>£14.00</b>
<b>Quilters Proportional Scale</b>	<b>£7.50</b>
<b>Quilters Preview Paper (20" x 25')</b>	<b>£12.50</b>
<b>Golden Threads Quilting Paper (18" x 20 yds)</b>	<b>£13.00</b>

### **Postage Rates for retail sales:**

<b>Orders up to £9.99 in value:</b>	<b>£4.00</b>
<b>Orders £10 up to £49.99 in value:</b>	<b>£5.00</b>
<b>Orders £50 up to £99.99 in value:</b>	<b>£6.00</b>
<b>Orders over £100 in value</b>	<b>Free</b>

Payment for miscellaneous items by card or direct bank transfer.

Pinhole Quilting

Poplars Farm, Naunton Beauchamp

Pershore, WR10 2LQ

Tel: 01386 462218

Email: [quilt@pinholequilting.co.uk](mailto:quilt@pinholequilting.co.uk)

Prices subject to change without notice.